

CEWELD CuZn40F

TYPE Universal brass brazing alloy with good strength

TOEPASSINGEN Mainly used in the furniture and the bicycle industry

EIGENSCHAPPEN Easy to use brass alloy for brazing

CLASSIFICATIE

AWS	A 5.8: RBCuZn-A
EN ISO	17672: Cu 670
W.Nr.	2.0367
F-nr	106

GESCHIKT VOOR Brazing: Steels, Copper, Cast iron, Copper Alloys, Nickel and for welding Brass and Bronze. This Alloy is mainly used in the furniture and the bicycle industry for joining Steels, also this Alloy can be used for rebuilding Brass-ship propellers by flame welding.

GOEDKEURINGEN

LASPOSITIES



TYPICAL CHEMICAL ANALYSIS OF THE FILLER METAL (%)

Si	Mn	Cu	Zn	Sn
0.1	0.1	60	Rem.	0.2

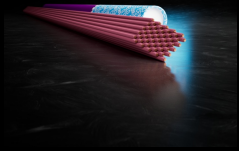
MECHANISCHE WAARDEN

Heat Treatment	R _{P0.2} (MPa)	R _m (MPa)	A ₅ (%)	Hardness
As Welded		350		88 HB

HERDROGEN Not required

MELTING RANGE 870 - 900°C

GAS ACC. EN ISO 14175



CEWELD CuZn40F

CUZN40F 2,0 X 500MM

Packaging	KG/unit	EanCode
Tube	1	8720663421036

CUZN40F 2,5 X 500MM

Packaging	KG/unit	EanCode
Tube	1	8720663421081

CUZN40F 3,0 X 500MM

Packaging	KG/unit	EanCode
Tube	1	8720663421104

CUZN40F 4,0 X 500MM

Packaging	KG/unit	EanCode
Tube	1	8720663421111

CUZN40F 5,0 X 500MM

Packaging	KG/unit	EanCode
Tube	1	8720663421128