

CEWELD CuZn40F

TYPE Universal brass brazing alloy with good strength

APPLICATIONS Mainly used in the furniture and the bicycle industry

PROPRIÉTÉS Easy to use brass alloy for brazing

CLASSIFICATION

AWS	A 5.8: RBCuZn-A
EN ISO	17672: Cu 670
W.Nr.	2.0367
F-nr	106

CONVIENT POUR Brazing: Steels, Copper, Cast iron, Copper Alloys, Nickel and for welding Brass and Bronze. This Alloy is mainly used in the furniture and the bicycle industry for joining Steels, also this Alloy can be used for rebuilding Brass-ship propellers by flame welding.

AGRÉMENTS

POSITIONS DE SOUDAGE



TYPICAL CHEMICAL ANALYSIS OF THE FILLER METAL (%)

Si	Mn	Cu	Zn	Sn
0.1	0.1	60	Rem.	0.2

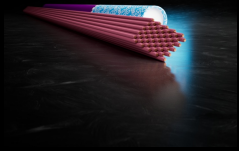
PROPRIÉTÉS MÉCANIQUES

Heat Treatment	R _{P0.2} (MPa)	R _m (MPa)	A ₅ (%)	Hardness
As Welded		350		88 HB

ETUVAGE Not required

MELTING RANGE 870 - 900°C

GAS ACC. EN ISO 14175



CEWELD CuZn40F

CUZN40F 2,0 X 500MM

Packaging	KG/unit	EanCode
Tube	1	8720663421036

CUZN40F 2,5 X 500MM

Packaging	KG/unit	EanCode
Tube	1	8720663421081

CUZN40F 3,0 X 500MM

Packaging	KG/unit	EanCode
Tube	1	8720663421104

CUZN40F 4,0 X 500MM

Packaging	KG/unit	EanCode
Tube	1	8720663421111

CUZN40F 5,0 X 500MM

Packaging	KG/unit	EanCode
Tube	1	8720663421128