

# CEWELD CuZn40F

**TYPE** Universal brass brazing alloy with good strength

**APPLICATIONS** Mainly used in the furniture and the bicycle industry

**PROPERTIES** Easy to use brass alloy for brazing

**CLASSIFICATION**

|        |                 |
|--------|-----------------|
| AWS    | A 5.8: RBCuZn-A |
| EN ISO | 17672: Cu 670   |
| W.Nr.  | 2.0367          |
| F-nr   | 106             |

**SUITABLE FOR** Brazing: Steels, Copper, Cast iron, Copper Alloys, Nickel and for welding Brass and Bronze. This Alloy is mainly used in the furniture and the bicycle industry for joining Steels, also this Alloy can be used for rebuilding Brass-ship propellers by flame welding.

**APPROVALS**

**WELDING POSITIONS**



**TYPICAL CHEMICAL ANALYSIS OF THE FILLER METAL (%)**

| Si  | Mn  | Cu | Zn   | Sn  |
|-----|-----|----|------|-----|
| 0.1 | 0.1 | 60 | Rem. | 0.2 |

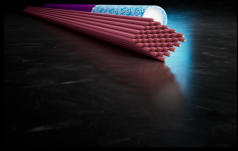
**MECHANICAL PROPERTIES**

| Heat Treatment | R <sub>P0.2</sub> (MPa) | R <sub>m</sub> (MPa) | A <sub>5</sub> (%) | Hardness |
|----------------|-------------------------|----------------------|--------------------|----------|
| As Welded      |                         | 350                  |                    | 88 HB    |

**REDRYING** Not required

**MELTING RANGE** 870 - 900°C

**GAS ACC. EN ISO 14175**



# CEWELD CuZn40F

CUZN40F 2,0 X 500MM

| Packaging | KG/unit | EanCode       |
|-----------|---------|---------------|
| Tube      | 1       | 8720663421036 |

CUZN40F 2,5 X 500MM

| Packaging | KG/unit | EanCode       |
|-----------|---------|---------------|
| Tube      | 1       | 8720663421081 |

CUZN40F 3,0 X 500MM

| Packaging | KG/unit | EanCode       |
|-----------|---------|---------------|
| Tube      | 1       | 8720663421104 |

CUZN40F 4,0 X 500MM

| Packaging | KG/unit | EanCode       |
|-----------|---------|---------------|
| Tube      | 1       | 8720663421111 |

CUZN40F 5,0 X 500MM

| Packaging | KG/unit | EanCode       |
|-----------|---------|---------------|
| Tube      | 1       | 8720663421128 |