

# CEWELD SA 410NiMo

**TYPE** Solid SAW filler metal for thermal shock resistant overlay welding

**ANWENDUNGEN** SA 410NiMo is a stainless solid SAW welding wire of the 12% Cr, 4.5% Ni, 0.5% Mo type. 410NiMo is used for welding similar martensitic and martensitic-ferritic steels in different applications, such as hydro turbines. Water and steam turbine parts of the same kind, thermoshock and high heat resistant. 1.4313, 1.4002, (G)X5CrNi(Mo) 13 4, X6CrAl 13, Grade CA 6 NM.

**EIGENSCHAFTEN** Wire with high Chromium content for thermo shock resistance. Fused flux FL 880 or agglomerated flux FL 838 can be used.

**KLASSIFIKATION**

|        |                  |
|--------|------------------|
| AWS    | A 5.9: ER410NiMo |
| EN ISO | 14343-A: S 13 4  |
| W.Nr.  | 1.4351           |
| F-nr   | 6                |
| FM     | 5                |

**GEEIGNET FÜR** Thermo shock resistant alloy, high temperature resistant, good corrosion resistance

**ZULASSUNGEN**

**SCHWEISSPOSITIONEN**



**TYPICAL CHEMICAL ANALYSIS OF THE FILLER METAL (%)**

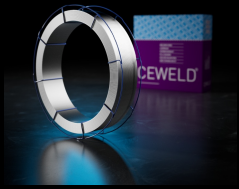
| C    | Si  | Mn  | P    | S    | Cr   | Ni  | Mo  |
|------|-----|-----|------|------|------|-----|-----|
| 0.02 | 0.5 | 0.6 | 0.02 | 0.01 | 12.5 | 4.8 | 0.5 |

**MECHANISCHE GÜTEWERTE**

| Heat Treatment | R <sub>p0,2</sub> (MPa) | R <sub>m</sub> (MPa) | A5 (%) | Hardness |
|----------------|-------------------------|----------------------|--------|----------|
| As Welded      | >500                    | >760                 | >15    | 38 HRc   |

**RÜCKTROCKNUNG** Not required

**GAS ACC. EN ISO 14175**



# CEWELD SA 410NiMo

SA 410NiMo 1,6MM

| Packaging | KG/unit | EanCode       |
|-----------|---------|---------------|
| K-415     | 25      | 8720663412065 |